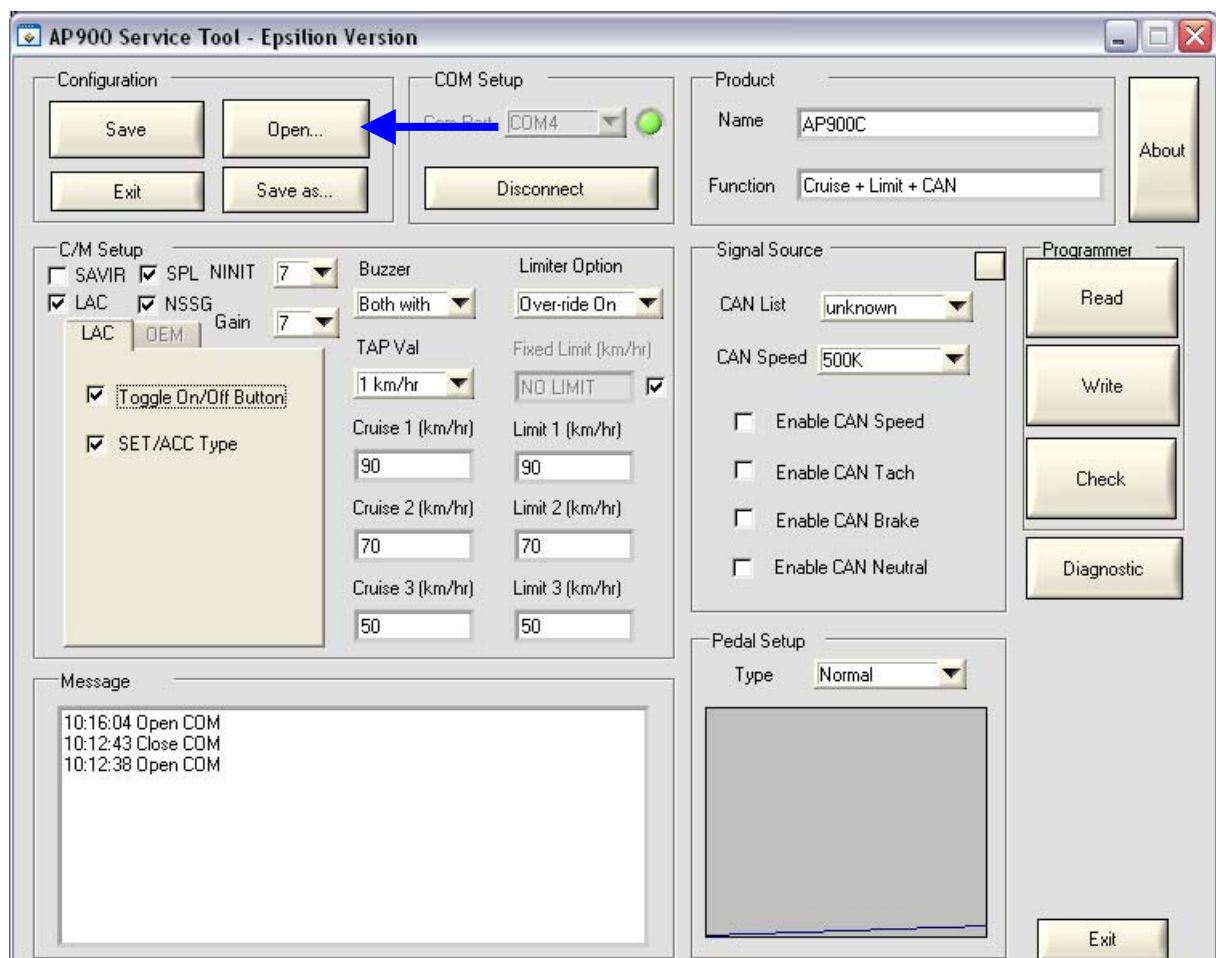
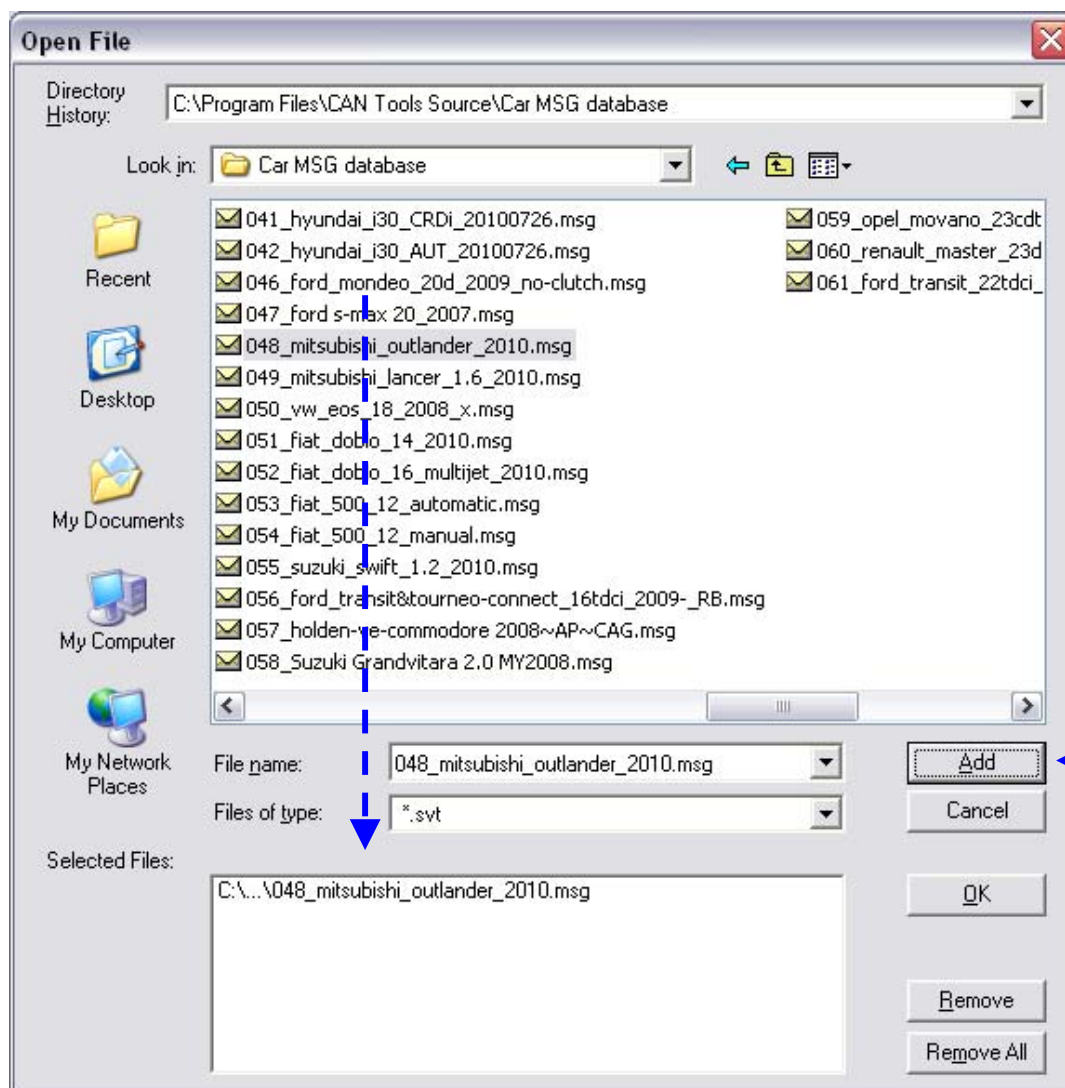


1. Select the COM-port
2. Press on "Connect"



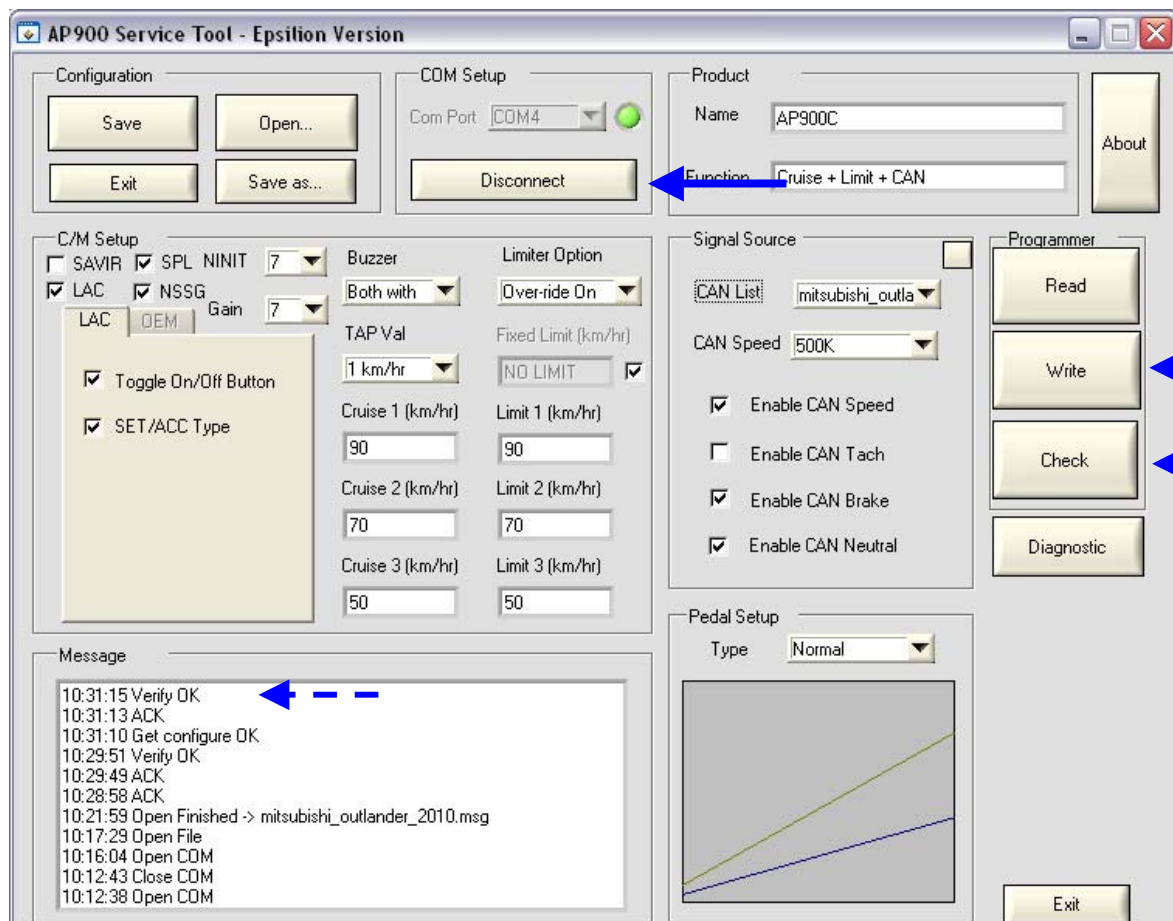
3. Press on "Open"



4. Select car-file

5. Press "Add" (the car file will be visible in the "Selected Files" window, you can select only 1 file)

6. Press "OK"



7. Press "Write" (to save the car-file in AP900C)

8. Press "Check" (to check if the file has been saved OK)
  9. You should see "Verify OK" in the Message window.
  10. Press "Disconnect"
- Finish